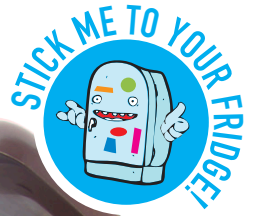




STOP FoodWaste.ie



BROWN BIN DO'S & DON'TS

Waste service providers are legally obliged to provide brown bins for collection of food waste to customers living in towns and villages with a population of greater than 500 people.



Use newspaper or paper bags to line your bin. Compostable bags are also suitable.



Do not use plastic bags to line your bin. Compostable bags are accepted.



Remove all food packaging before placing food in the bin.

YOUR BROWN BIN CAN TAKE ALL THESE MATERIALS...

 Meat, poultry & fish	 Meat & fish bones	 Plate scrapings	 Leftover pasta
 Fruit & vegetables	 Bread/baked goods	 Leftover cereals	 Leftover rice
 Coffee grounds & tea bags	 Egg & dairy products	 Raw and cooked food	

Preventing food waste is always the better option. However, by using your brown bin service you are protecting the environment, complying with the law and helping create a new compost industry in Ireland.